

BILL OF MATERIALS

USES OF UTILITY SHED

| ITEM | SIZE | PCS. | AMOUNT |
|------------------------------|----------------------|------|------------|
| CONCRETE FLOOR | 8'-0" x 8'-0" x 4" | 1 | 1 CU. YD |
| CONCRETE | 3/8" x 6" | 14 | 14 EA. |
| ANCHOR BOLTS | | | |
| OPTIONAL WOOD FLOOR | | | |
| JOISTS | 2x4x8'-0" | 5 | 27 F.B.M. |
| JOIST HEADER | 2x6x8'-0" | 16 | 16 F.B.M. |
| END JOIST & SKIDS | 4x4x8'-0" | 5 | 54 F.B.M. |
| FLOORING, EXTERIOR PLYWOOD | 3/8" x 4'-0" x 8'-0" | 2 | 2 SHEETS |
| EYE BOLTS | 3/8" x 6" | 2 | 2 EA. |
| NAILS, COMMON | 1/2" x 6" | 16d | 1 3/4 LBS. |
| NAILS, GALVANIZED | 6d | 6d | 3/4 LB. |
| 2 REAR PANELS | | | |
| STUDS | 2x4x6'-0" | 4 | 16 F.B.M. |
| SILL, GIRTS, & PLATE | 2x4x4'-0" | 10 | 27 F.B.M. |
| SASH BLOCKING | 2x4x2'-0" | 2 | 2 F.B.M. |
| SIDING, EXTERIOR PLYWOOD | 3/8" x 4'-0" x 8'-0" | 2 | 2 SHEETS |
| BATTEN, EXTERIOR PLYWOOD | 3/8" x 3"x6'-0" | 1 | 1 STRIP |
| WINDOW | 1'-8" x 3'-0" | 1 | 1 EA. |
| NAILS, COMMON | 16d | 16d | 1 1/4 LBS. |
| NAILS, GALVANIZED | 6d | 6d | 3/4 LB. |
| 4 SIDE PANELS | | | |
| GIRTS & SILL | 2x4x4'-0" | 10 | 27 F.B.M. |
| FRONT & CENTER STUDS | 2x4x8'-0" | 6 | 32 F.B.M. |
| REAR STUDS | 2x4x6'-0" | 2 | 8 F.B.M. |
| SIDING, EXTERIOR PLYWOOD | 3/8" x 4'-0" x 8'-0" | 4 | 4 SHEETS |
| BATTENS, EXTERIOR PLYWOOD | 3/8" x 3"x6'-0" | 2 | 2 STRIPS |
| RAFTER TRIM, FRONT | 3/8" x 4"x2'-8" | 2 | 2 STRIPS |
| RAFTER TRIM, REAR | 3/8" x 4"x8" | 2 | 2 STRIPS |
| RAILS, COMMON | 16d | 16d | 2 1/2 LBS. |
| RAILS, GALVANIZED | 6d | 6d | 2 LBS. |
| 1 FRONT PANEL | | | |
| STUDS | 2x4x8'-0" | 3 | 16 F.B.M. |
| SILL, GIRTS, & PLATE | 2x4x4'-0" | 5 | 14 F.B.M. |
| HEADER | 2x6x4'-0" | 1 | 3 F.B.M. |
| SASH BLOCKING | 2x4x4'-0" | 1 | 3 F.B.M. |
| SIDING, EXTERIOR PLYWOOD | 3/8" x 4'-0" x 8'-0" | 1 | 1 SHEET |
| WINDOW | 2'-5" x 3'-0" | 1 | 1 EA. |
| NAILS, COMMON | 16d | 16d | 1 LB. |
| NAILS, GALVANIZED | 6d | 6d | 1/2 LB. |
| 1 FRONT PANEL - SLIDING DOOR | | | |
| STUDS | 2x4x8'-0" | 3 | 16 F.B.M. |
| PLATE | 2x4x4'-0" | 1 | 3 F.B.M. |
| HEADER | 2x6x4'-0" | 1 | 4 F.B.M. |
| SIDING, EXTERIOR PLYWOOD | 3/8" x 2"x7'-5" | 1 | 1 STRIP |
| | 3/8" x 6"x7'-5" | 1 | 1 STRIP |
| | 3/8" x 7"x4'-0" | 1 | 1 STRIP |
| | 3/8" x 4'-0" x 8'-0" | 1 | 1 SHEET |
| DOOR, EXTERIOR PLYWOOD | 8'-0" LONG | 1 | 1 EA. |
| SLIDING DOOR TRACK | 3" DIA WHEEL | 2 | 2 EA. |
| SLIDING DOOR TROLLEYS | 2" DIA WHEEL | 2 | 2 EA. |
| DOOR STAY ROLLERS | 16d | 16d | 1/2 LB. |
| NAILS, COMMON | 6d | 6d | 1/4 LB. |
| NAILS, GALVANIZED | | | |
| 2 ROOF PANELS | | | |
| RAFTERS | 2x4x12'-0" | 4 | 32 F.B.M. |
| GIRTS | 2x4x4'-0" | 14 | 38 F.B.M. |
| FACIA, FRONT | 3/8" x 4"x8'-0" | 1 | 1 SHEET |
| FACIA, REAR | 3/8" x 4"x8'-0" | 1 | 1 SHEET |
| SOFFIT, FRONT | 3/8" x 2'-7" x 8'-0" | 1 | 1 SHEET |
| SOFFIT, REAR | 3/8" x 7"x8'-0" | 1 | 1 SHEET |
| NAILS, COMMON | 16d | 16d | 1 1/2 LBS. |
| NAILS, GALVANIZED | 2" SCREW SHANK | 100 | 100 EA. |
| NAILS, ALUMINUM | BV CRIMP | 2 | 2 SHEETS |
| ROOFING, ALUMINUM | .024" x 50" x 12'-0" | 4 | 4 EA. |
| FRAMING ANCHORS (4x4) | 18 GAUGE | 4 | 4 EA. |
| FRAMING ANCHORS (4x4) | 18 GAUGE | 4 | 4 EA. |

NOTE
BATTENS, RAFTER TRIM, SOFFITS, & FACIAS TO BE CUT FROM 1 SHEET OF 3/8" x 4'-0" x 8'-0" EXTERIOR PLYWOOD & WASTE FROM THE SIDING USED ON THE SIDE & REAR PANELS

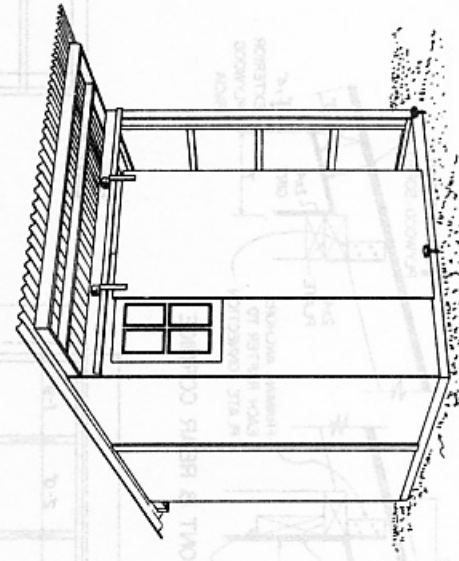
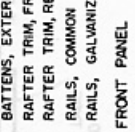
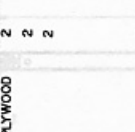
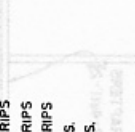
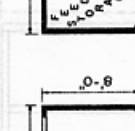
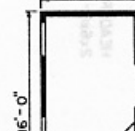
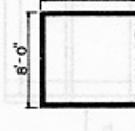
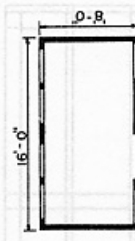
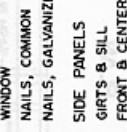
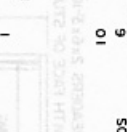
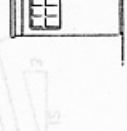
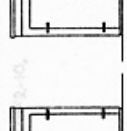
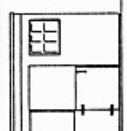
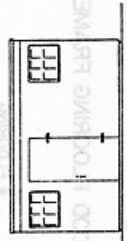
I. GENERAL
1. ALL JOINTS MAY BE CALLED TO PROVIDE A MORE WEATHER PROOF STRUCTURE.
2. DOORS MAY BE SLIDING OR SWING TYPE.
3. CONCRETE OR WOOD FLOOR SHOWN ON SHEET No. 2

II. TOOL SHED 8'-0" x 8'-0" (SHOWN ABOVE)

III. 4-H BIRD POULTRY HOUSE 8'-0" x 8'-0"
1. USE 2" INSULATION WITH VAPOR BARRIER IN WALLS & CEILING.
2. INTERIOR FINISH SHOULD BE A DENSE, EASILY CLEANED MATERIAL.
3. USE HOPPER TYPE WINDOWS FOR VENTILATION.
4. PROVIDE SCREENS FOR DOORS & WINDOWS. (1" MESH DESIRED)

IV. HORSE STALL OR SHEEP PEN 8'-0" x 16'-0"
1. STALL AREA INTERIOR, FINISHED WITH 1/2" PLYWOOD
2. PLANK FLOOR RECOMMENDED.

V. SHOP



PERSPECTIVE

UNIV. OF CONN. PLAN No. 302

COOPERATIVE EXTENSION WORK IN AGRICULTURE AND HOME ECONOMICS
STATE OF TENNESSEE
UNIVERSITY OF TENNESSEE
AND
UNITED STATES DEPARTMENT OF AGRICULTURE COOPERATING

| | |
|--------------|--------------|
| UTILITY SHED | |
| CONN. '70 | 6100 |
| | SHEET 1 OF 2 |

