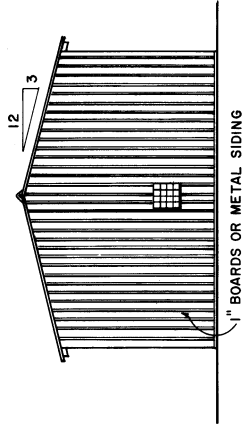
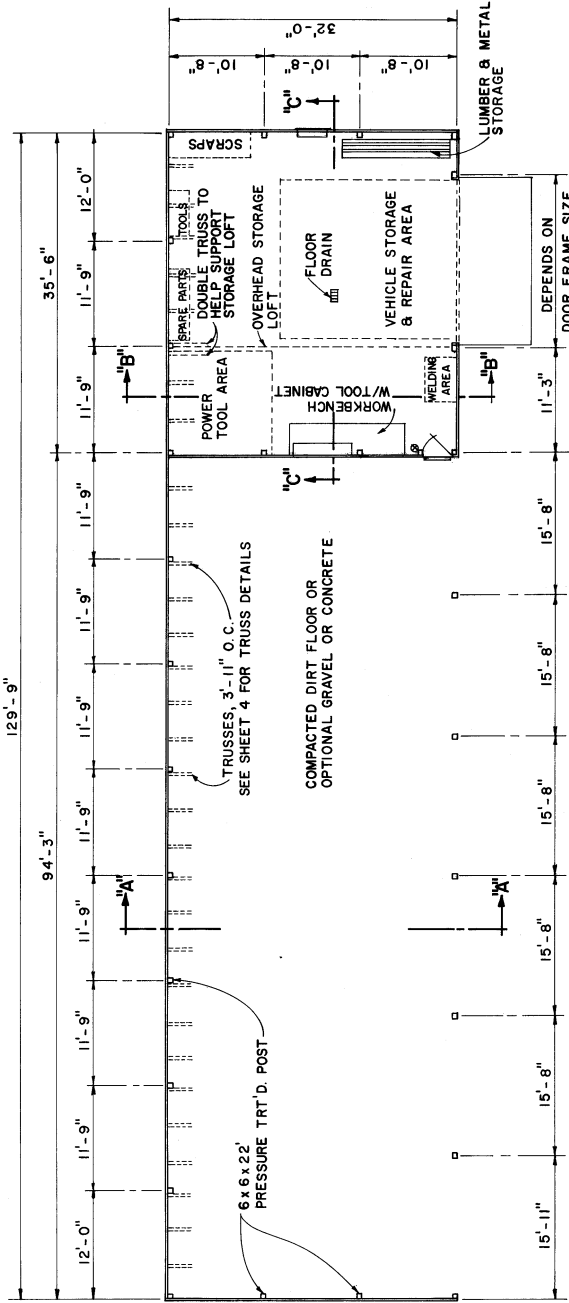


FRONT ELEVATION

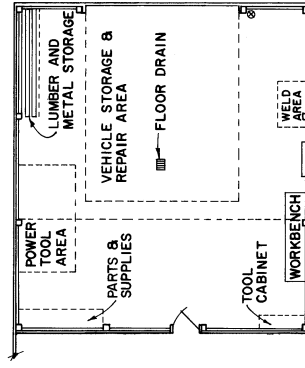


END ELEVATION

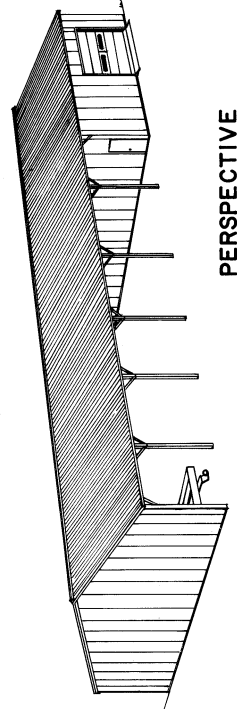
NOTE: CONSULT LOCAL BUILDING CODE AUTHORITIES BEFORE STARTING CONSTRUCTION.



FLOOR PLAN



OPTIONAL SHOP LAYOUT



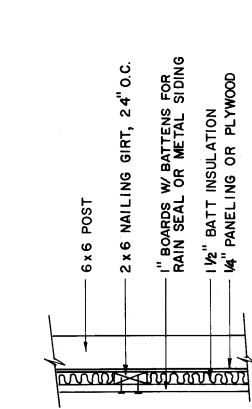
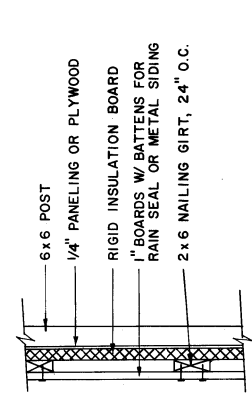
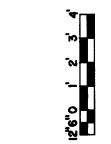
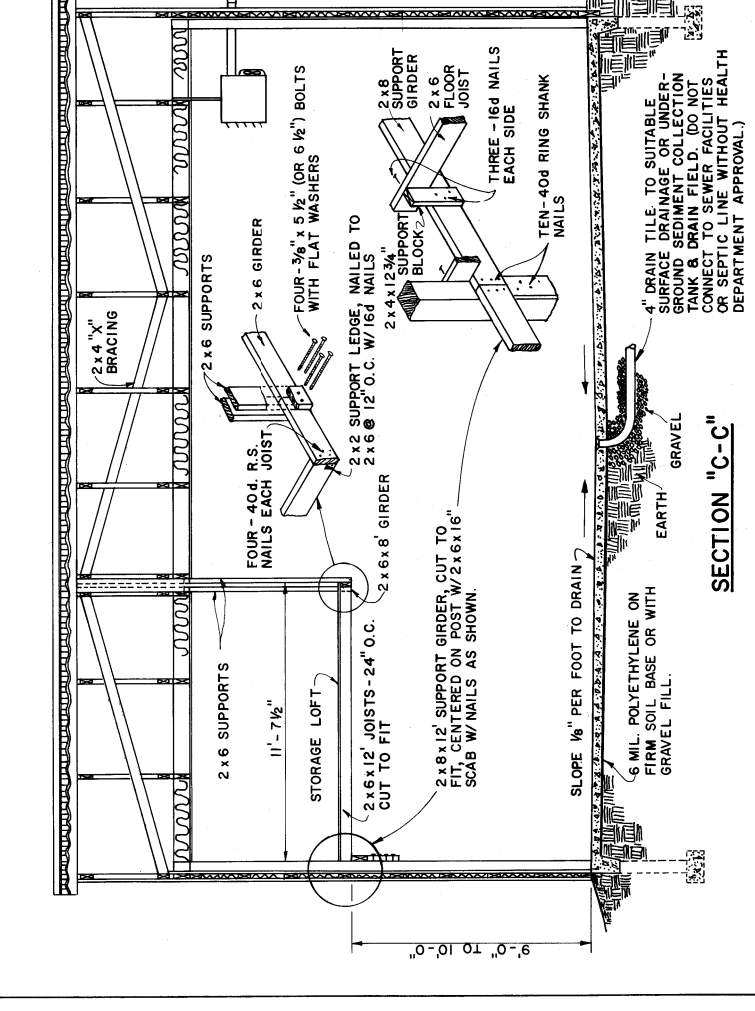
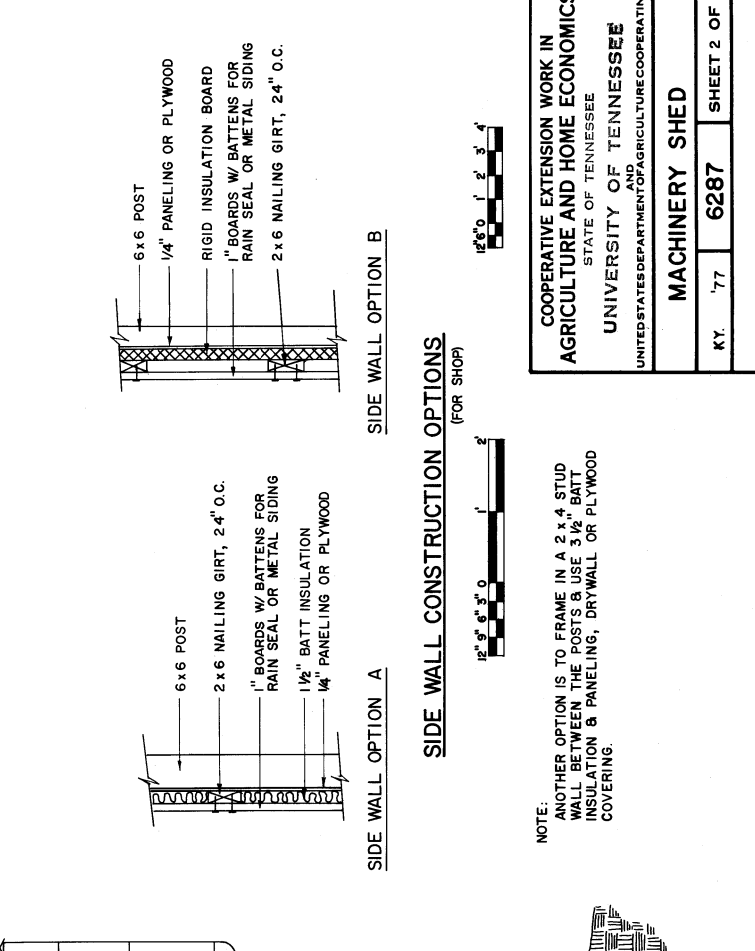
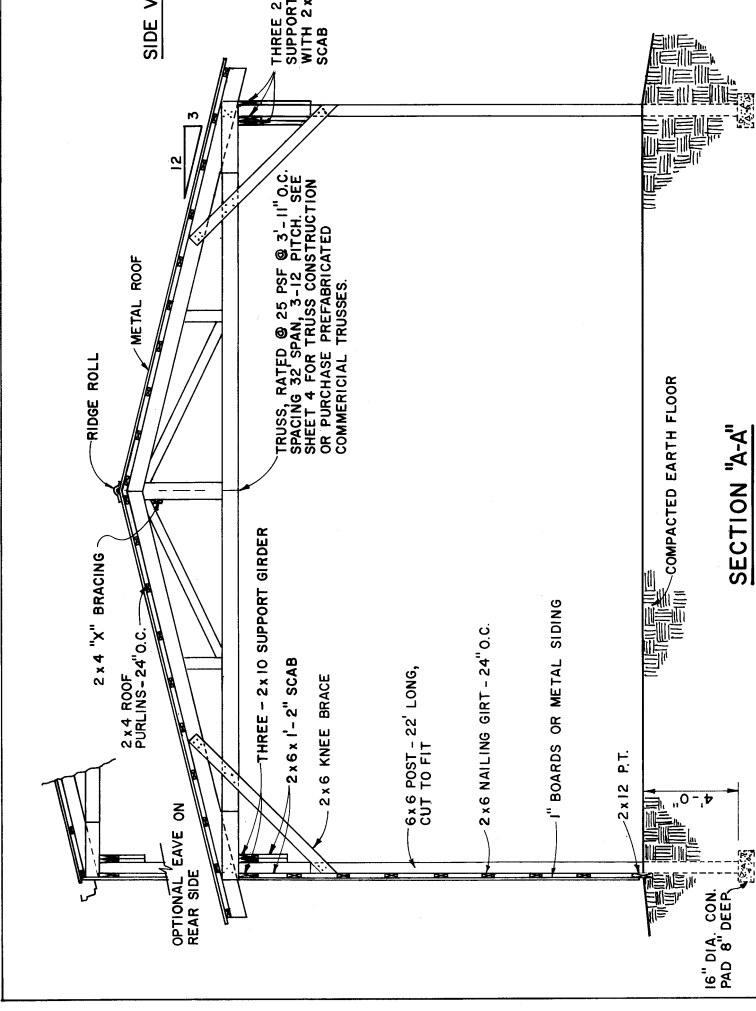
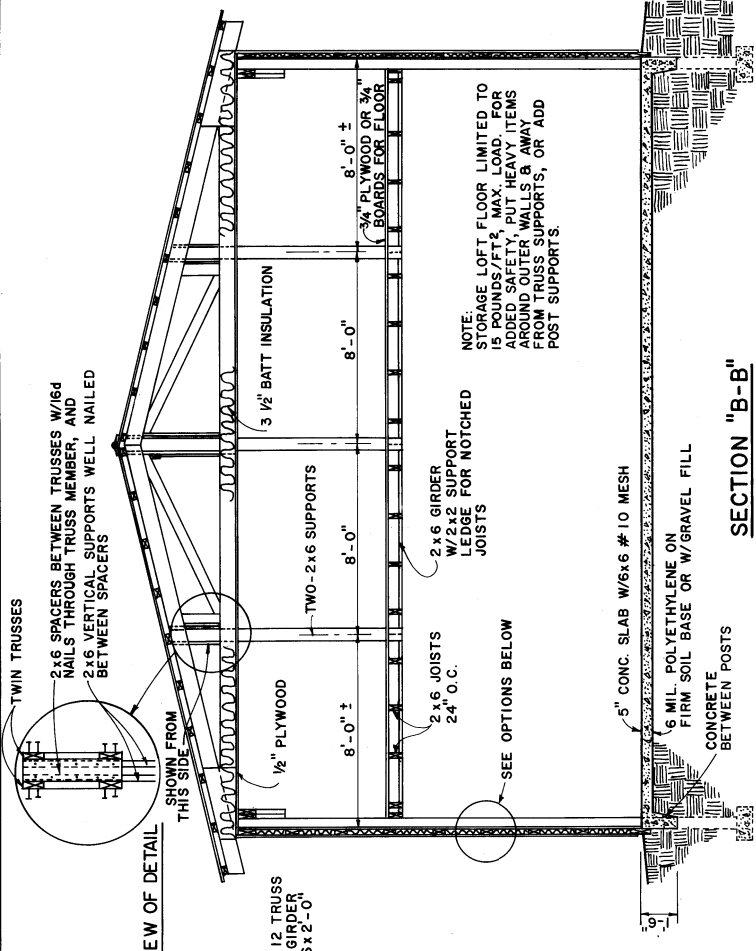
PERSPECTIVE
NO SCALE

COOPERATIVE EXTENSION WORK IN
AGRICULTURE AND HOME ECONOMICS
STATE OF TENNESSEE
UNIVERSITY OF TENNESSEE
UNITED STATES DEPARTMENT OF AGRICULTURE COOPERATING

MACHINERY SHED

KY. '77 6287

SHEET 1 OF 4



SIDE WALL OPTION B

SIDE WALL OPTION A

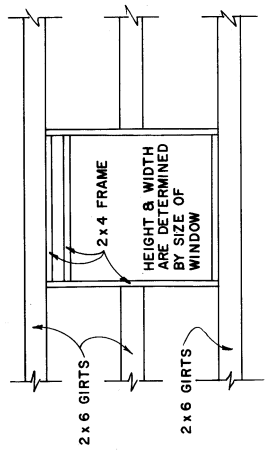
SIDE WALL CONSTRUCTION OPTIONS
(FOR SHOP)

NOTE: ANOTHER OPTION IS TO FRAME IN A 2 x 4 STUD WALL BETWEEN THE POSTS & USE 3 1/2" BATT INSULATION & PANELING, DRYWALL OR PLYWOOD COVERING.

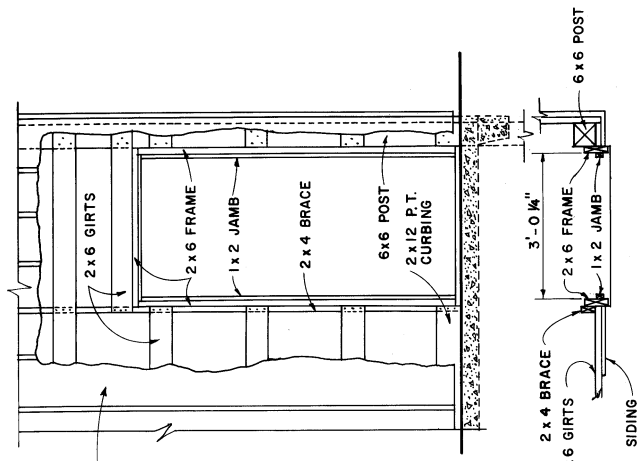
COOPERATIVE EXTENSION WORK IN
AGRICULTURE AND HOME ECONOMICS
STATE OF TENNESSEE
UNIVERSITY OF TENNESSEE
UNITED STATES DEPARTMENT OF AGRICULTURE COOPERATING

KY. '77 6287 SHEET 2 OF 4

MACHINERY SHED

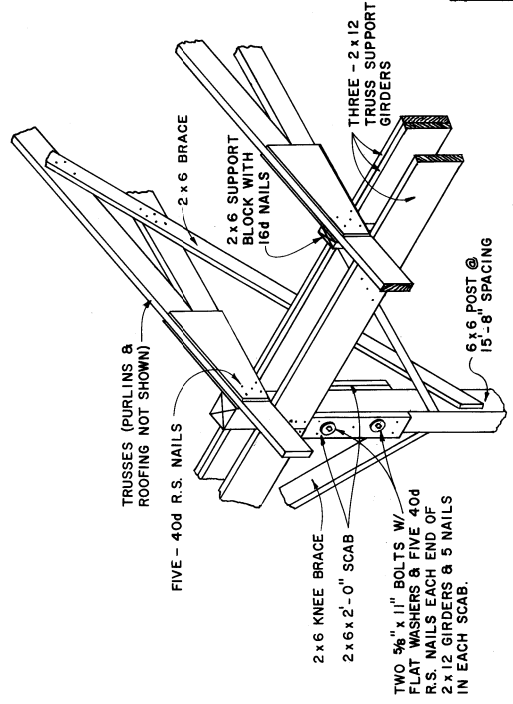


WINDOW FRAMING DETAIL



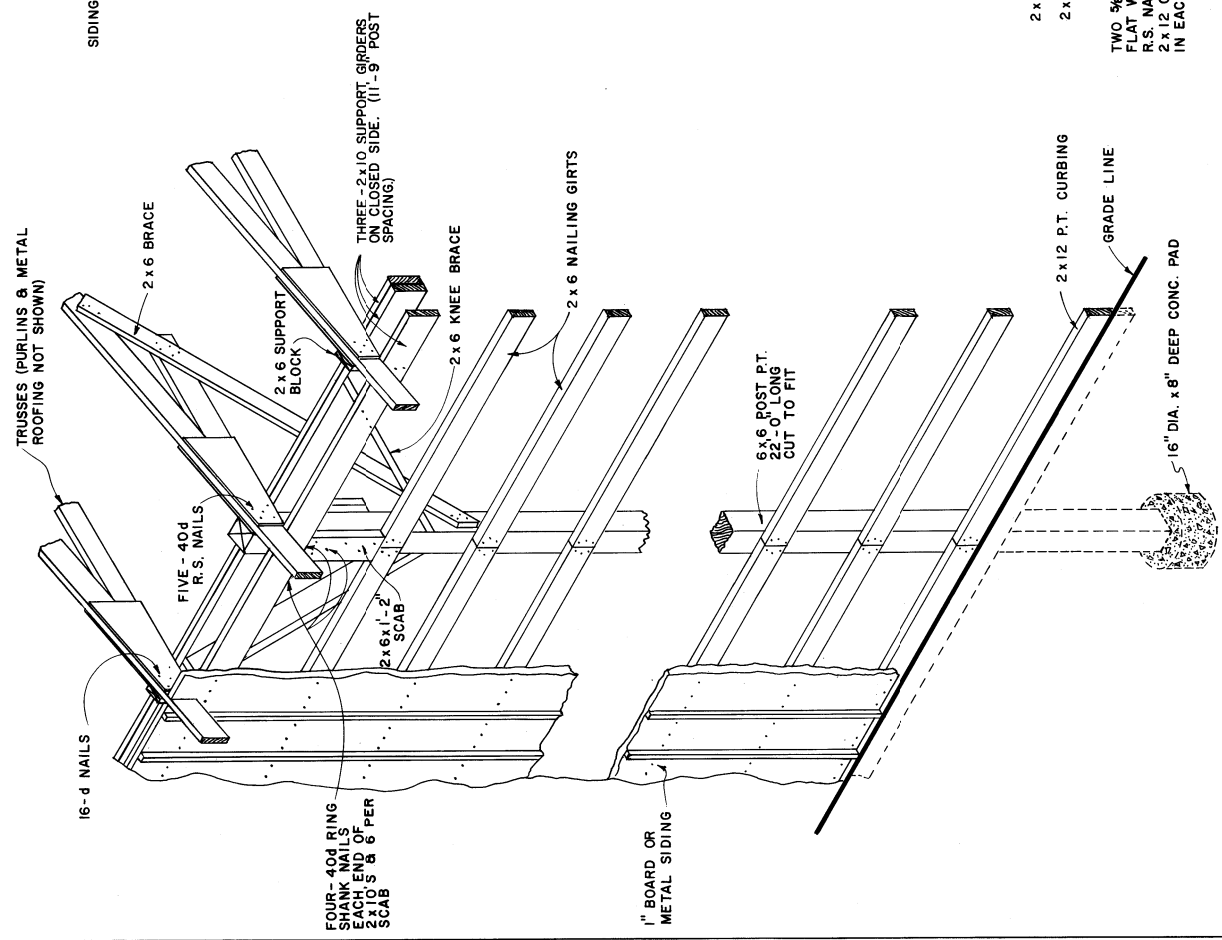
DOOR FRAMING DETAIL

NO SCALE



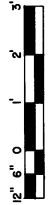
POST CONSTRUCTION DETAIL

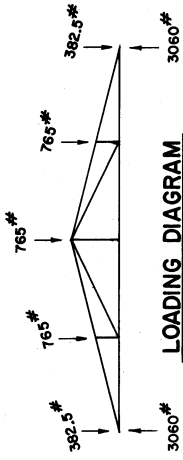
(ENTRY SIDE OF SHED)



SIDE WALL CONSTRUCTION DETAIL

(FOR SHED)
NO SCALE

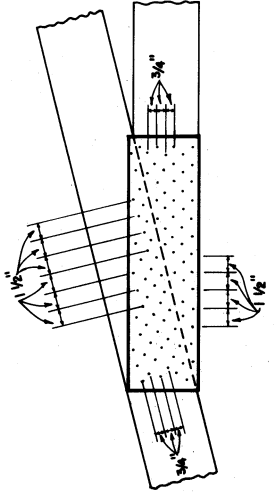




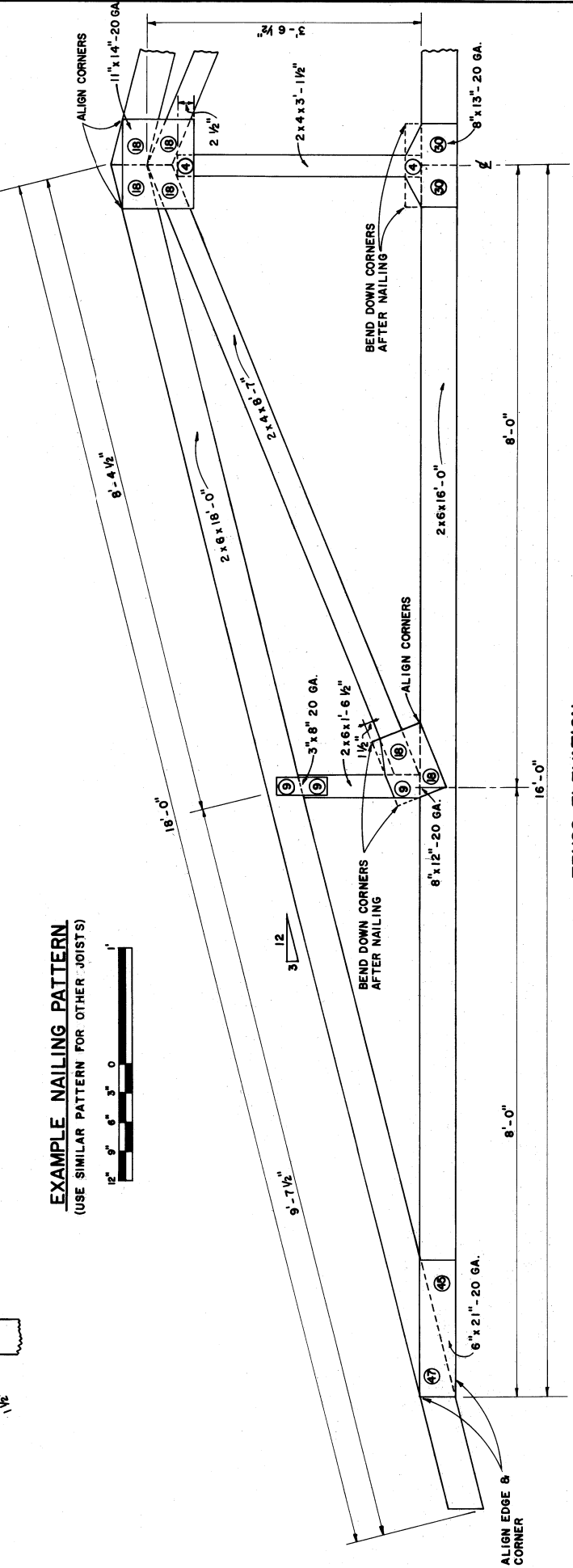
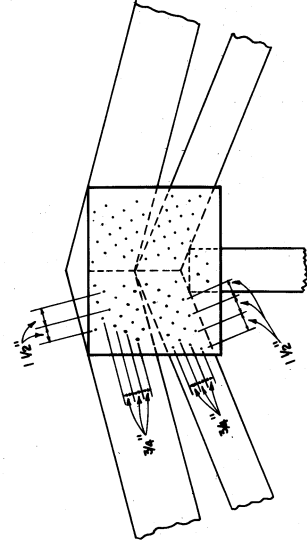
LOADING DIAGRAM

120' 12 3/4"

DESIGN LOADS @ 4' SPACING
 ① ROOF, WIND, SNOW = 25 PSF.
 ON TOP CHORD.
 ② NONE ON BOTTOM CHORD
 EXCEPT FOR LOFT.



EXAMPLE NAILING PATTERN
 (USE SIMILAR PATTERN FOR OTHER JOISTS)



TRUSS ELEVATION



NOTE:
 DETAILS OF WOOD GUSSETS
 AND NAILING NOT SHOWN.
 METAL GUSSETS ARE PRE-
 FERRED.

COOPERATIVE EXTENSION WORK IN
 AGRICULTURE AND HOME ECONOMICS
 STATE OF TENNESSEE
 UNIVERSITY OF TENNESSEE
 AND
 UNITED STATES DEPARTMENT OF AGRICULTURE COOPERATING

MACHINERY SHED
 K.Y. '77 **6287** SHEET 4 OF 4

SPECIFICATIONS FOR NAIL-ON METAL-GUSSET-PLATE TRUSS CONSTRUCTION:

- LUMBER SHALL BE DRESSED, KILN DRY, STANDARD OR CONSTRUCTION GRADE DOUGLASS FIR, NO. 1 OR 2 S.O.U. YEL PINE OR EQUIVALENT.
- GUSSET PLATES SHALL BE GALVANIZED STEEL 18 OR 20 GAUGE AS SPECIFIED, ONE ON BOTH SIDES OF EACH JOINT. PLATES MAY BE PRE-PUNCHED OR BLANK. (DRIVE NAILS RIGHT THROUGH BLANK PLATE)
- NAILS SHALL BE 1 1/2" TYPE, W/11 GAUGE, SCREEN-SHANK, HARDENED, PALL-TYPE, W/11 GAUGE.
- NUMBER OF NAILS DRIVEN THROUGH GUSSET PLATE INTO EACH SIDE OF EACH MEMBER IS SHOWN BY NUMERALS IN CIRCLE AT EACH JOINT. DRIVE ALL NAILS SNUG AGAINST THE METAL PLATE.
- ALIGN GUSSET PLATE OVER JOINT AS SHOWN ON TRUSS DIAGRAM. BEGIN NAILING IN CENTER OF GUSSET PLATE AND PROGRESS OUTWARDS TO ELIMINATE WRINKLES.
- SPACE NAILS EVENLY OVER GUSSET PLATE ABOUT 1-1/2" APART ALONG GRAIN OF WOOD AND 3/4" APART ACROSS GRAIN IN STAGGERED PATTERN AS SHOWN AT THE RIGHT FOR MAXIMUM STRENGTH AND NO SPLITTING. USE A JIG TO KEEP TRUSS MEMBERS ALIGNED AND PROVIDE FIRM SUPPORT UNDERNEATH FOR NAILING. BUTT ALL JOINTS TOGETHER TIGHTLY. A FEW NAILS IN EACH JOINT SHOULD COME WITHIN 3/8 TO 1/2 INCH OF JOINT BUTT-ENDS AND EDGES TO HOLD METAL PLATE FLAT.
- DO NOT FABRICATE ANY JOINT HAVING A KNOT OR OTHER WOOD IMPERFECTION UNDER OR ADJACENT TO GUSSET PLATE.
- HANDLE TRUSS WITH CARE WHEN ROTATING TO ATTACH OPPOSITE-SIDE GUSSET PLATES.



BILL OF MATERIALS

ITEM	NO.	SIZE	QUANTITY
Top Chord	2	2 x 6 x 18'	36 bd. ft.
Bottom Chord	2	2 x 6 x 16'	32 bd. ft.
Diagonals	2	2 x 4 x 1'-6 1/2"	2.1 bd. ft.
	2	2 x 4 x 8'-7 1/2"	11.4 bd. ft.
	1	2 x 4 x 3'-1 1/2"	2.1 bd. ft.
			<u>83.6 bd. ft.</u>
Metal Plates	4	6 x 21 - 20 GA	
	4	8 x 12 - 20 GA	
	4	3 x 8 - 20 GA	
	2	11 x 14 - 20 GA	
	2	8 x 13 - 20 GA	
Nails	900	1 1/2", 11 GA., Screen Shank	6 lbs.