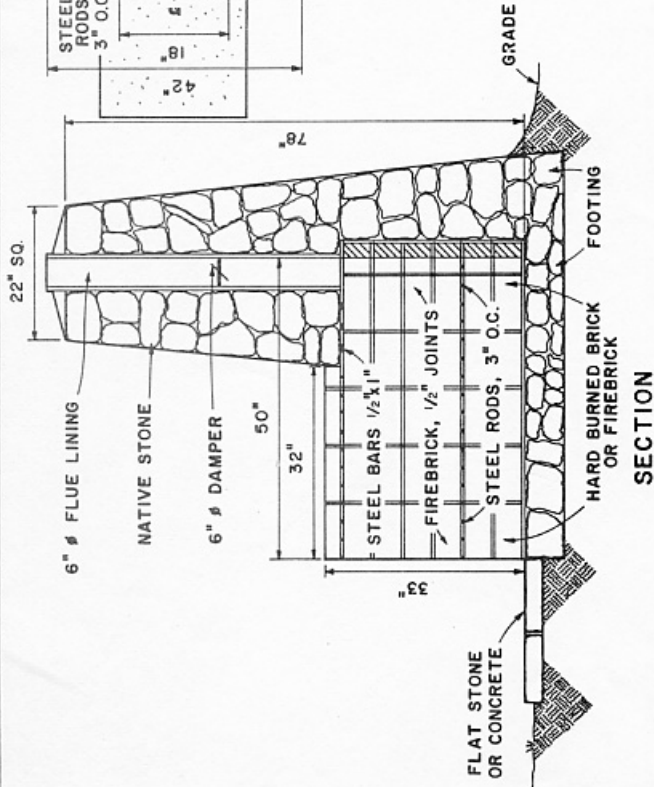


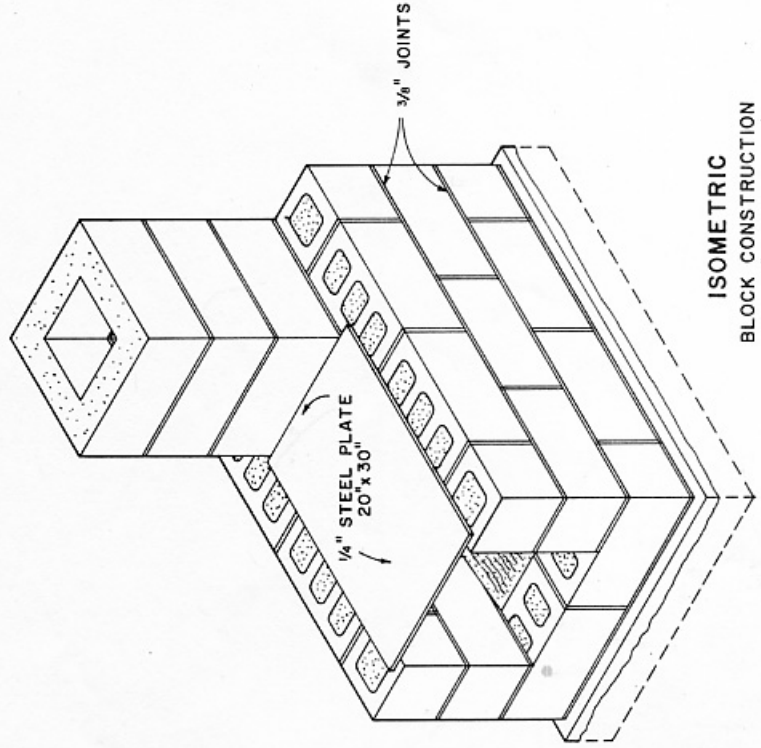
PLAN

**BILL OF MATERIALS**

- STONE CONSTRUCTION**
- 50 CU. FT. NATIVE STONE
  - MORTAR: 1:3 MIX
  - 5 BAGS CEMENT
  - 11 CU. FT. SAND
  - 98 FIREBRICK  $\frac{1}{2} \times \frac{1}{2} \times 22"$
  - 3 STEEL BARS  $\frac{1}{2}" \phi \times 22"$
  - 28 STEEL RODS  $\frac{1}{2}" \phi \times 22"$
  - 1 FLUE LINING OR TILE  $6" \phi \times 50"$
  - 1 DAMPER  $6" \phi$

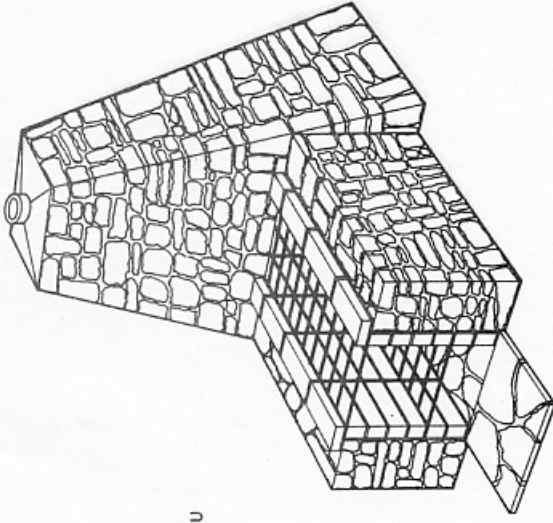


SECTION



ISOMETRIC  
BLOCK CONSTRUCTION

PERSPECTIVE



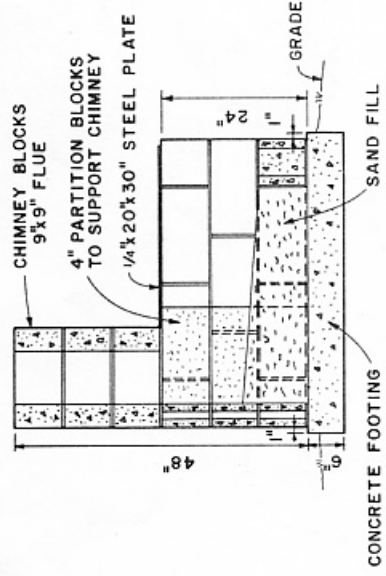
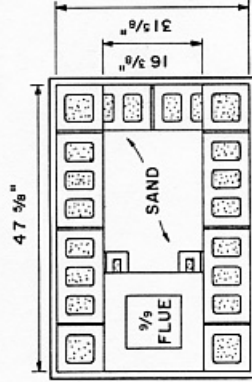
**BILL OF MATERIALS**

- CONCRETE BLOCK CONSTRUCTION**
- 16 REGULAR BLOCKS  $8 \times 8 \times 16"$
  - 6 HALF BLOCKS  $8 \times 8 \times 8"$
  - 9 PARTITION BLOCKS  $4 \times 8 \times 16"$
  - 3 CHIMNEY BLOCKS  $(9 \times 9"$  OPENING  $17 \times 8 \times 17")$
  - 1 STEEL PLATE  $\frac{1}{4} \times 20 \times 30"$
  - MORTAR:
    - 1 96 LB. SACK PORTLAND CEMENT
    - 1 100 LB. HYDRATED LIME
    - 300 LB. MASON SAND
  - 2 CONCRETE BASE:
    - 1 96 LB. SACKS OF PORTLAND CEMENT
    - 1 400 LB. SAND
    - 1 500 LB. GRAVEL OR STONE

BASED ON: OREGON, VIRGINIA AND NATIONAL  
PARK SERVICE PLANS.



PLAN  
STEEL PLATE NOT SHOWN



SECTION  
CONCRETE FOOTING  
SAND FILL  
GRADE

