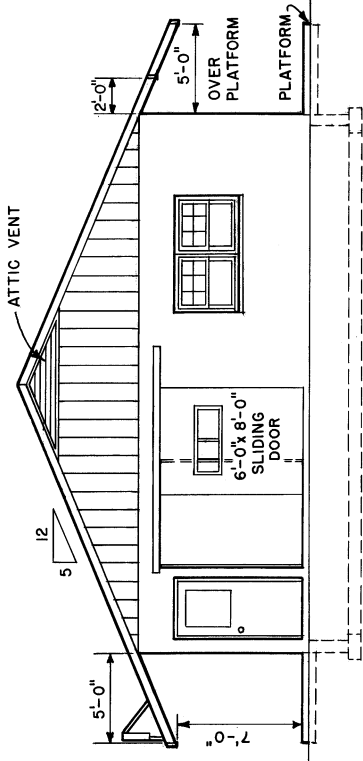
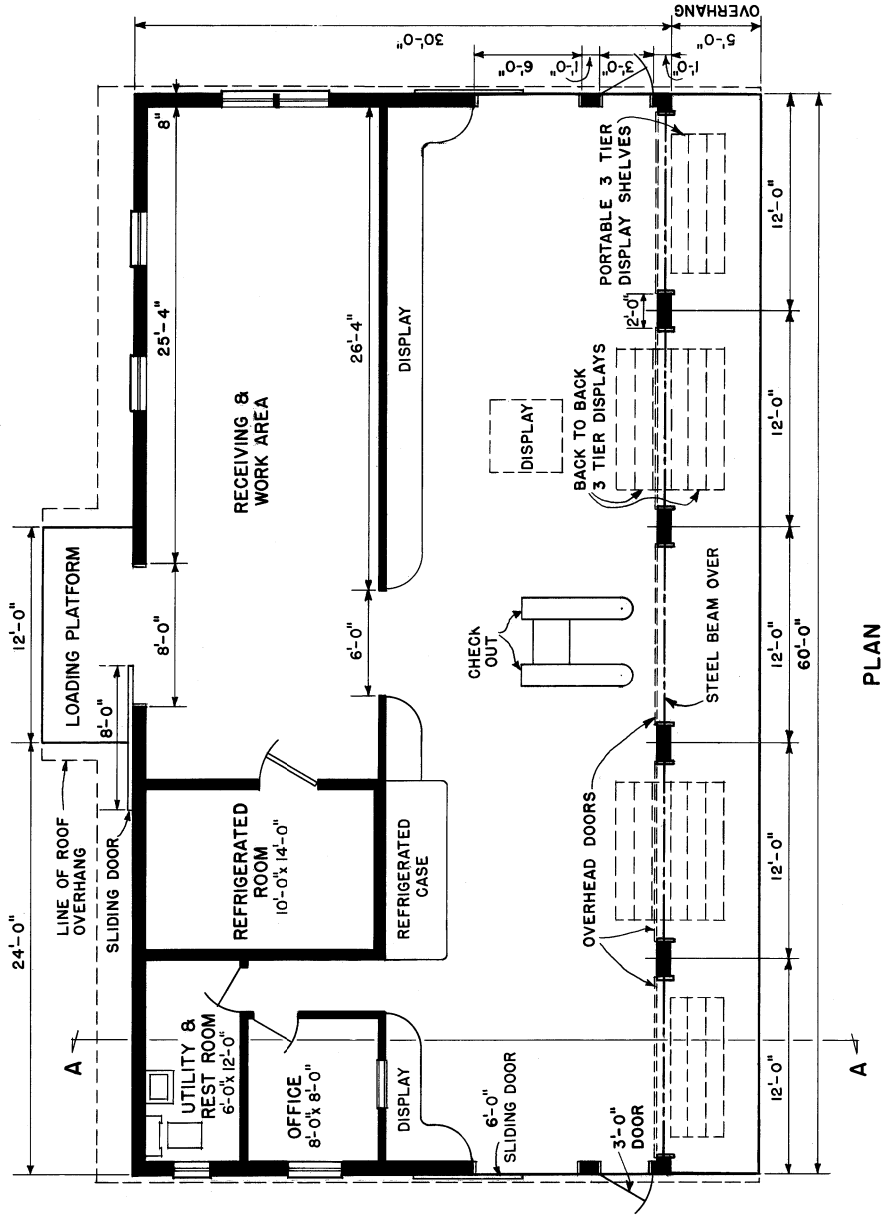


FRONT ELEVATION

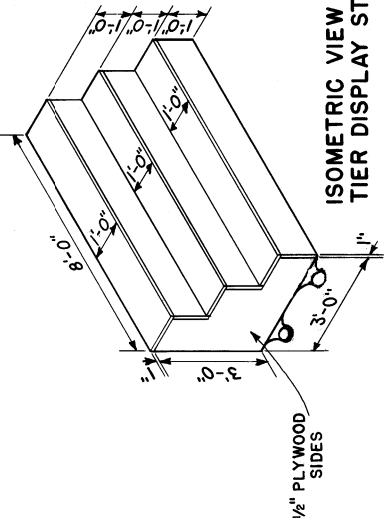


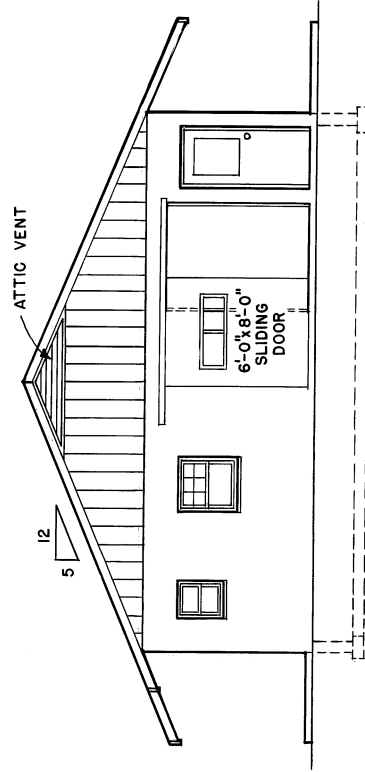
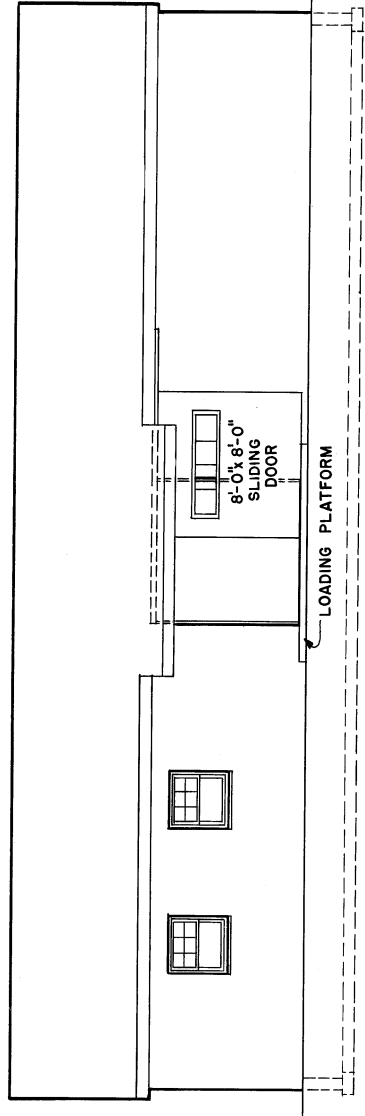
RIGHT SIDE ELEVATION



PLAN

NOTE: DIMENSIONS SHOWN ARE NOMINAL, 1"x12" LUMBER MAY BE USED.



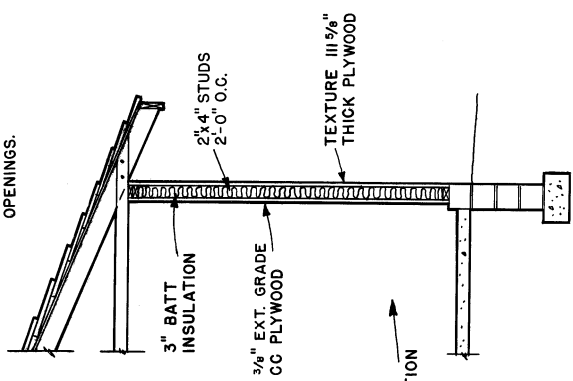
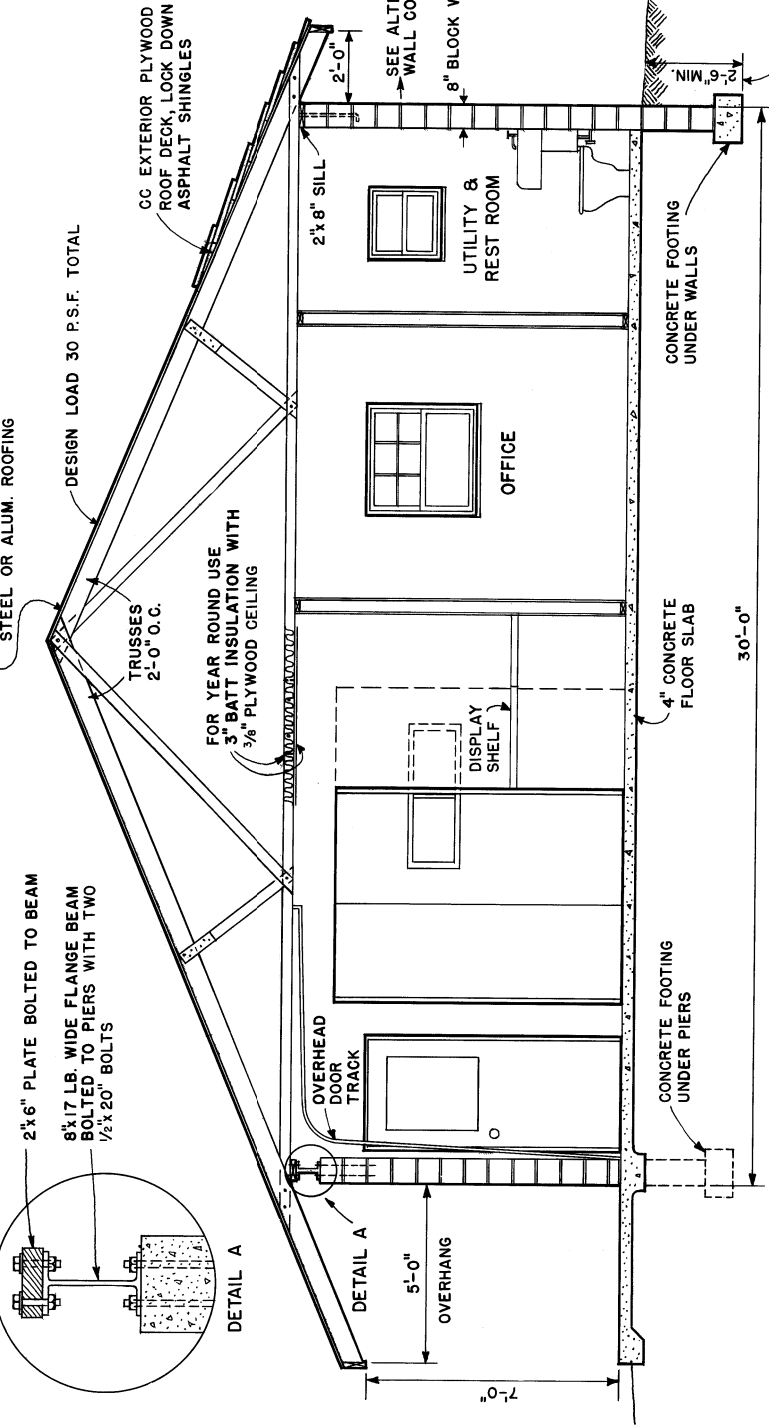
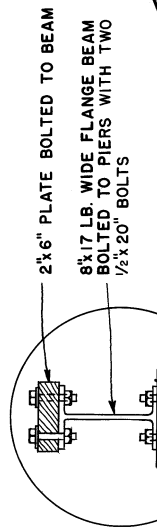


REAR ELEVATION

LEFT SIDE ELEVATION

ALTERNATE ROOF CONSTRUCTION
TRUSSES 4'-0" O.C.
NAILERS 2"x4", 2'-0" O.C.
STEEL OR ALUM. ROOFING

NOTE: REINFORCED CONCRETE
LINTELS OVER END WALL
OPENINGS.



ALTERNATE STUD WALL CONSTRUCTION

NOTE: PIERS ARE CAST CONCRETE OR
PLASTER BLOCKS WITH CORES
FILLED. REINFORCE WITH TWO
1/2" RODS WHICH EXTEND INTO
FOOTING.

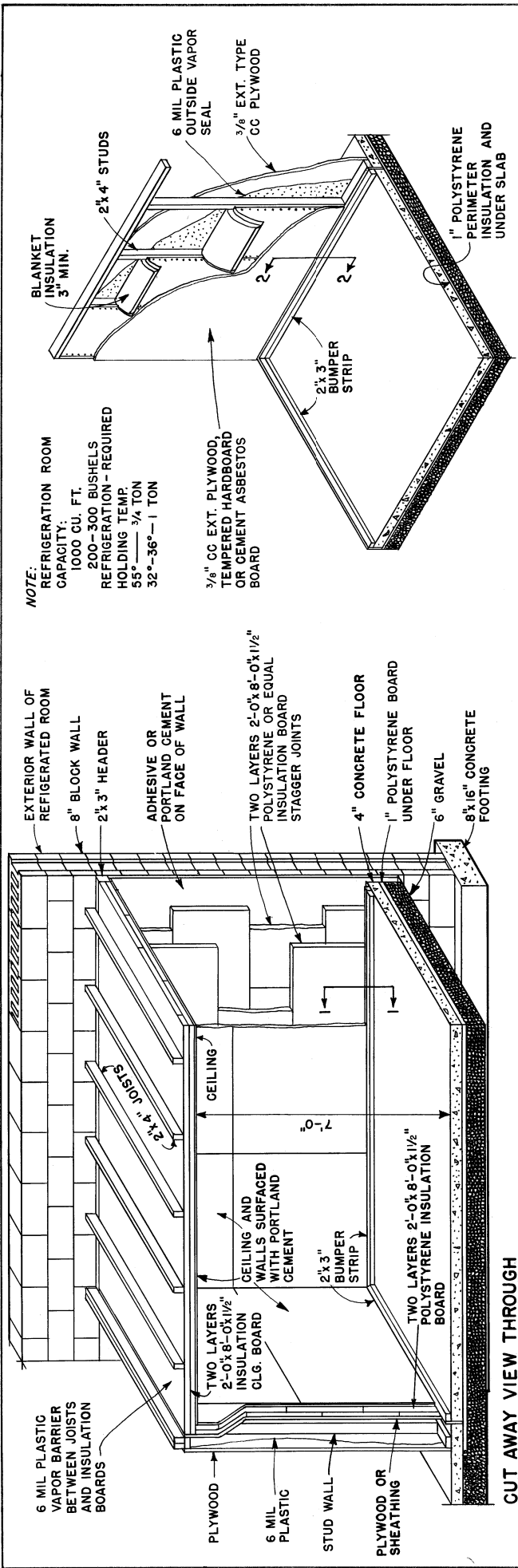
SECTION A-A

COOPERATIVE EXTENSION WORK IN
AGRICULTURE AND HOME ECONOMICS
STATE OF TENNESSEE

UNIVERSITY OF TENNESSEE
AND
UNITED STATES DEPARTMENT OF AGRICULTURE COOPERATING

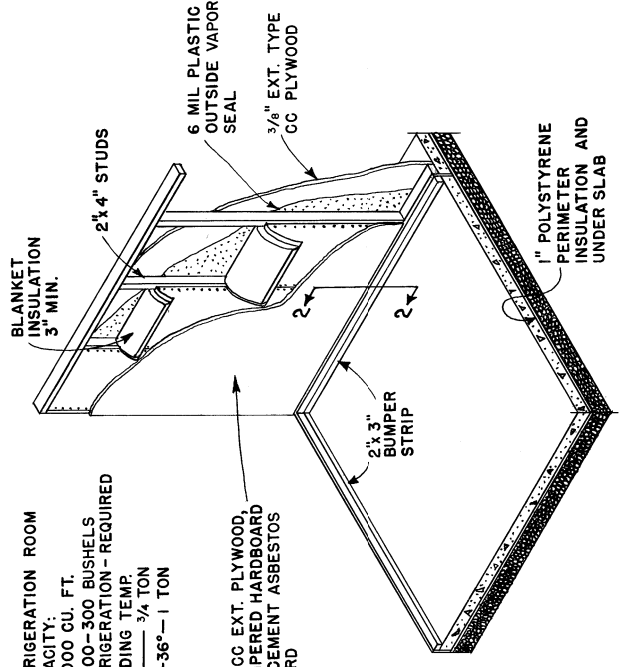
ROADSIDE MARKET

N.J. '67 EX. 6027 SHEET 2 OF 3

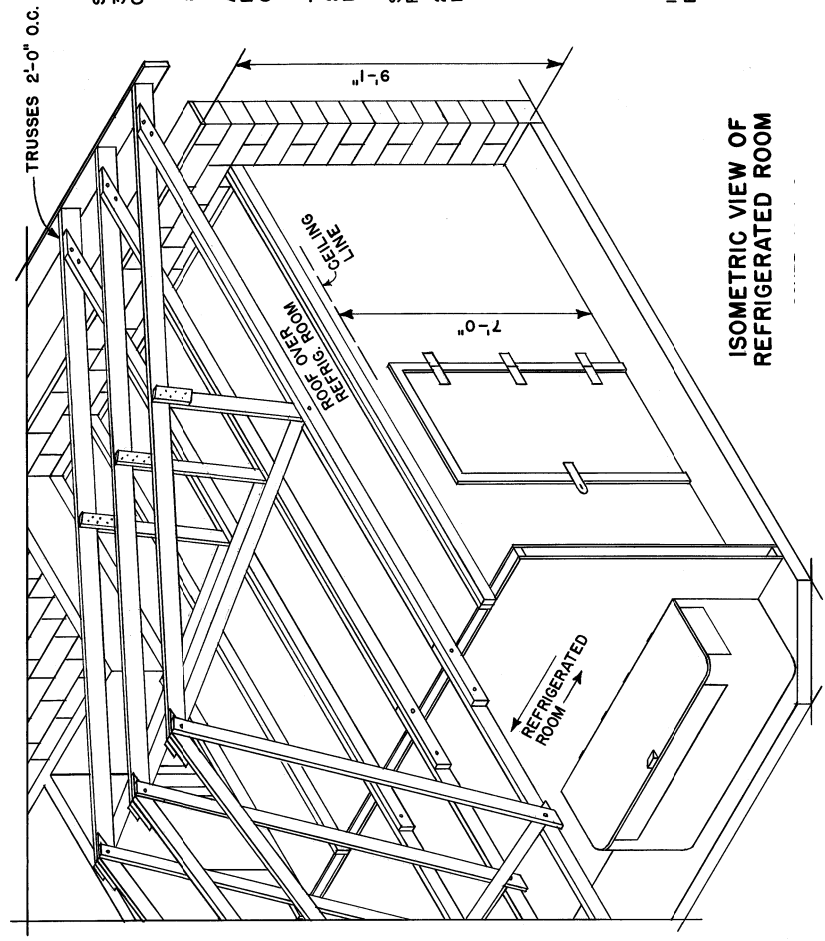


CUT AWAY VIEW THROUGH REFRIGERATED ROOM

NOTE: REFRIGERATION ROOM CAPACITY: 1000 CU. FT. 200-300 BUSHELS REFRIGERATION - REQUIRED HOLDING TEMP. 55° - 3/4 TON 32°-36° - 1 TON

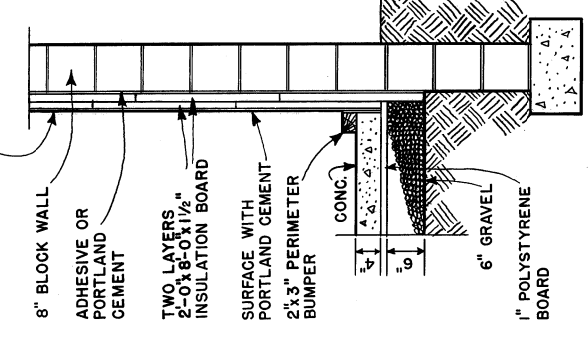


ALTERNATE VIEW THROUGH STUD WALL CONSTRUCTION

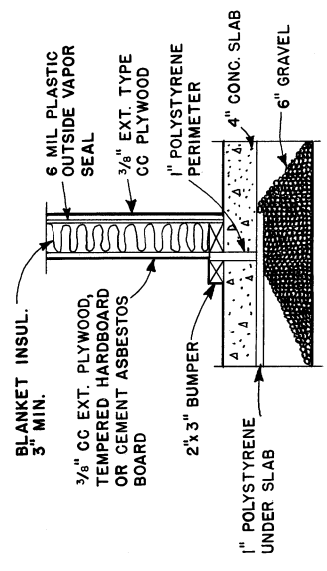


ISOMETRIC VIEW OF REFRIGERATED ROOM

SCORE CEMENT IN 3-6x3-6 SQUARES TO CONTROL CRACKING



SECTION 1-1



SECTION 2-2